

1. Shyama Prasad Mukherji Rurban Mission

Prelims Syllabus: Governance - Schemes

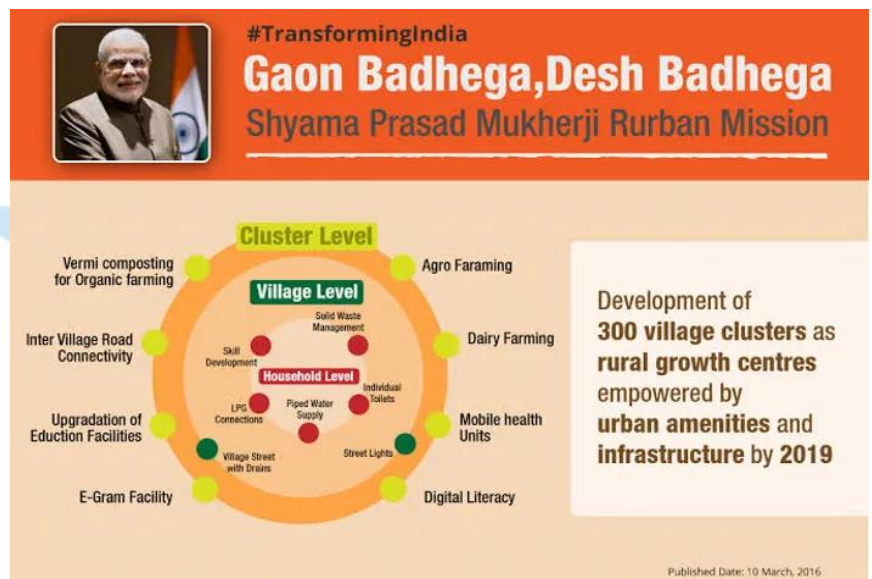
Mains Syllabus: GS-II Welfare schemes for vulnerable sections of the population by the Centre and States and the performance of these schemes; mechanisms, laws, institutions and Bodies Constituted for the Protection and Betterment of these vulnerable sections.

Why in News?

- 4th anniversary of the **Shyama Prasad Mukherji Rurban Mission** was observed recently.
- It was launched from Kurubhat in Rajnandgaon District of Chhattisgarh on 21st February 2016.

About Shyama Prasad Mukherji Rurban Mission:

- SPMRM is a scheme launched by the **Ministry of Rural Development (MoRD)** in 2016 to deliver integrated project based infrastructure in the rural areas, which will also include **development of economic activities and Skill Development.**



- It was designed to deliver catalytic interventions to rural areas on the threshold of growth.
- It is now a Centrally Sponsored Scheme funding shared between the Centre and the State in a ratio of 60:40 for Plain area States and 90:10 for Himalayan and NE States.
- The Mission aims at development of 300 Rurban clusters, in five years.
- Under the mission, the Central government in coordination with the district administration has taken measures to bring about multi-layered phased development of the rural gram panchayats and villages on the lines of urban cities with proper civic amenities keeping the soul of villages intact.

What is a Rurban Cluster?

- A 'Rurban cluster', would be a cluster of geographically contiguous villages with a population of about 25000 to 50000 in plain and coastal areas and with a population of 5000 to 15000 in desert, hilly or tribal areas.
- There are 2 categories of clusters: **Non-Tribal and Tribal**.

What is the Role of the States?

- The State Government identifies the clusters in accordance with the Framework for Implementation prepared by the MoRD.
- For the selection of clusters, the MoRD is adopting a scientific process of cluster selection which involves an objective analysis at the district, sub district and village level, of the Demography, Economy, Tourism and pilgrimage significance and transportation corridor impact.

Why Rurban Development is Essential?

- These clusters typically illustrate potential for growth, have economic drivers and derive locational and competitive advantages.

What are the outcomes envisaged under this Mission?

- Bridging the rural-urban divide-viz: economic, technological and those related to facilities and Services.
- Stimulating local economic development with emphasis on reduction of poverty and unemployment in Rural Areas.
- Spreading development in the Region.
- Attracting Investment in Rural Areas.